

**PES**

**Pingel Exchanger Service, Inc.**

**HEAT EXCHANGERS  
INTERCOOLERS  
AFTERCOOLERS**

**Service,  
Our Commitment  
to You.**

OUR NEW  
AREA CODE  
IS  
**(636)**

**PES**

Pingel Exchanger Service, Inc.

1185 Mason Circle  
Pevely, MO 63070

Tel: (314) 475-9500  
Fax: (314) 475-9505

**MODERN REPAIR  
AND SERVICE CENTER**

A large, completely equipped, modern service center is managed by knowledgeable professionals with over sixty years cumulative experience. PES has the equipment to accomplish the most difficult tasks and meet the most demanding requirements. We have the facilities to handle projects of great diversity and size. The wide range of customer services includes custom repairs and replacements, OEM repairs and replacements, and emergency repairs and replacements.

**DRAFTING SERVICES**

Building can begin without the benefit of drawings, but repair and rebuilding tasks are normally supported by the PES drafting department. Customers may call in and request special services or fax drawings for equipment that is needed quickly.

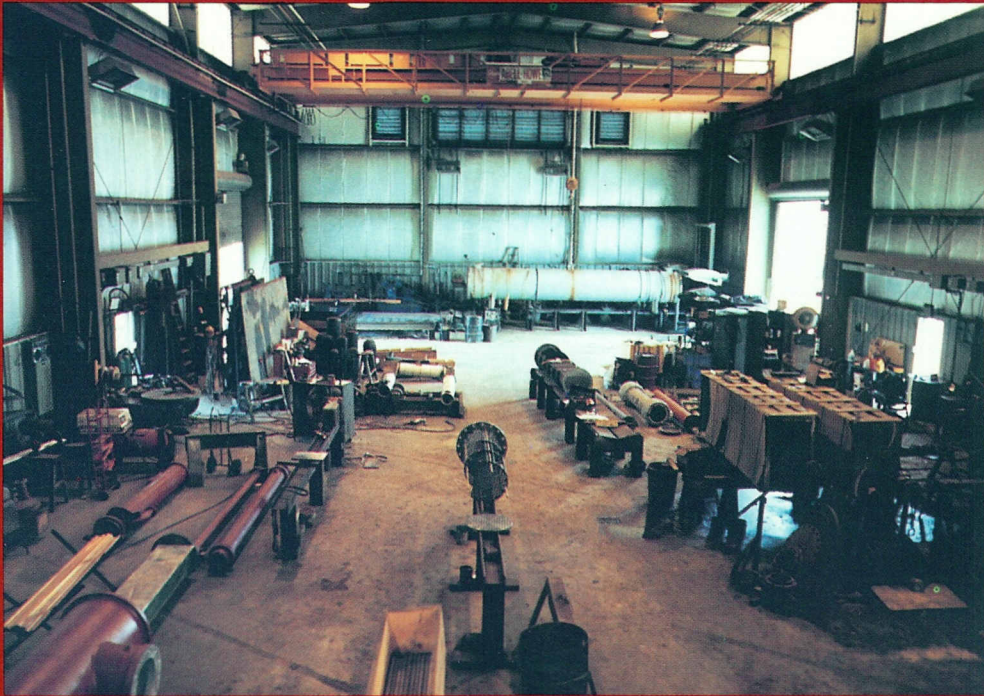
**LARGE INVENTORY  
OF COMPONENTS AND  
MATERIALS**

A large inventory of components and materials is maintained to meet emergency needs and fast turn-around schedules. Building of special parts and complete rebuilding are possible with a talented staff using special equipment and modern fabrication methods in spacious, well-organized facilities.

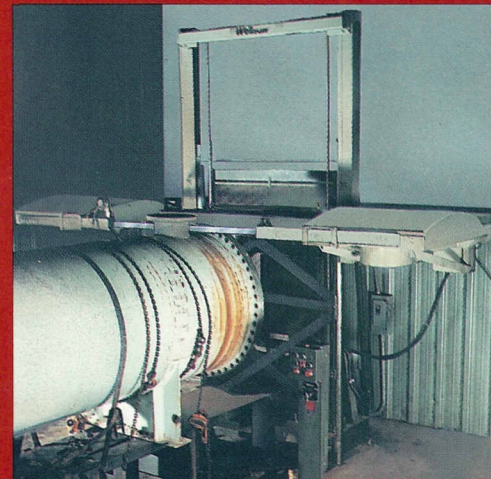
**TRANSPORTATION SERVICES**

Our repair and service center is also supported by a fleet of trucks to assure the customer of safe, on-time deliveries. Common carriers are used when needed, but 95% of the transportation is provided by PES owned and operated trucks. Control over shipping is one of the ways we meet deadlines, assure safety, and provide the customer with comprehensive services.

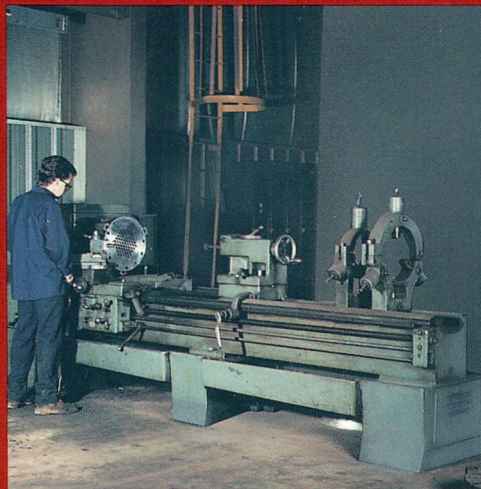
Overview of repair and service center showing one of two overhead cranes with lifting capabilities of 25 tons.



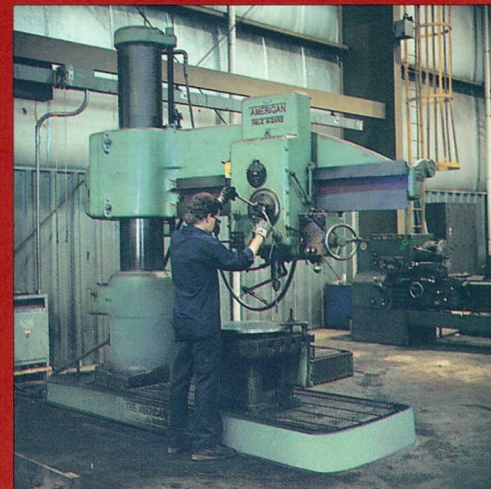
Wellsaw, 1220G, with the capability of cutting a 72" diameter bundle or exchanger.



Series of five large aftercooler units. New bundles were installed after shells were reconditioned. These units were delivered to a large pharmaceutical company on PES owned and operated vehicles.



LeBlond 26" swing x 8' table lathe.

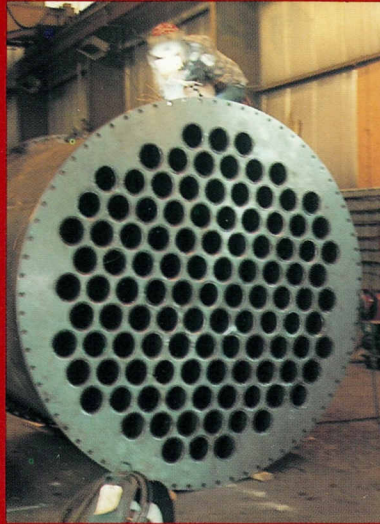


American Hole Wizard 6' x 15" column radial drill.

**Service,  
Our Commitment  
to You.**

# DIVERSE CAPABILITIES

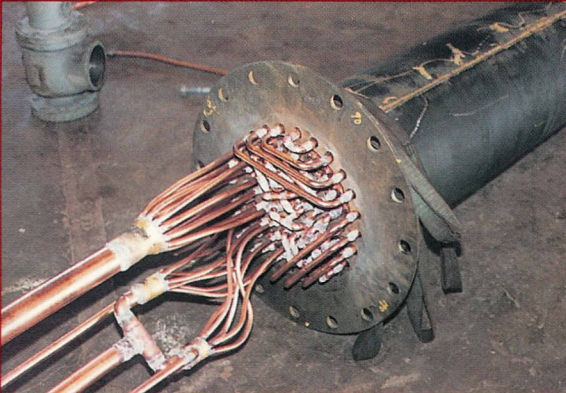
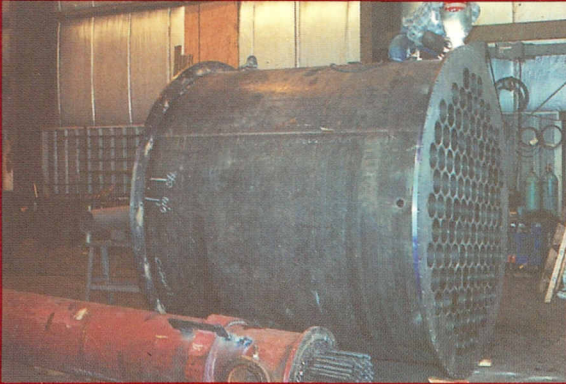
Closeup of tubes used in 6' diameter Carbon Steel exchanger.



Oil cooler, U-tube design. This design is used in power plants.



Carbon Steel E-shell exchanger 6' in diameter with 6" diameter tubes used in a process plant.



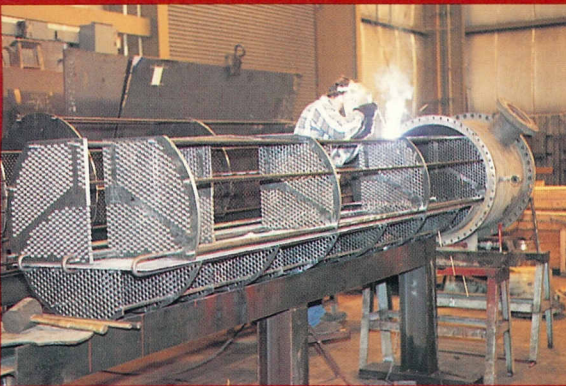
Air dryer assembly. Tubes are splined Copper pipe. All the connections are Copper and Silver soldered joints.



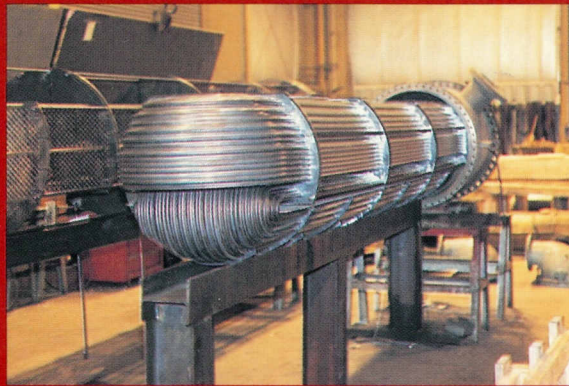
Large scrubber coil assembly for use in a power plant. Unit size is approximately 2' x 11' x 26'. Constructed of Carbon Steel with high-finned tubes.



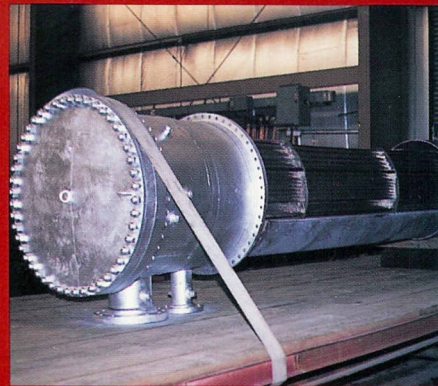
Large scrubber ready for delivery.



A low pressure feedwater cage assembly being prepared for tubing. This unit was supplied with new support plates and baffle plates. All other components were reused. Before reusing any baffle or support plates, they are cleaned and thoroughly checked for oversized tube holes.



A completed bundle with 304 Stainless Steel tubes. The drain cooler shroud will be welded on after a tubeside hydrostatic test.



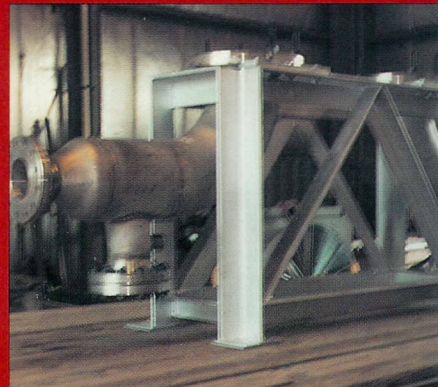
Same bundle completed and ready for shipment on PE owned and operated truck.



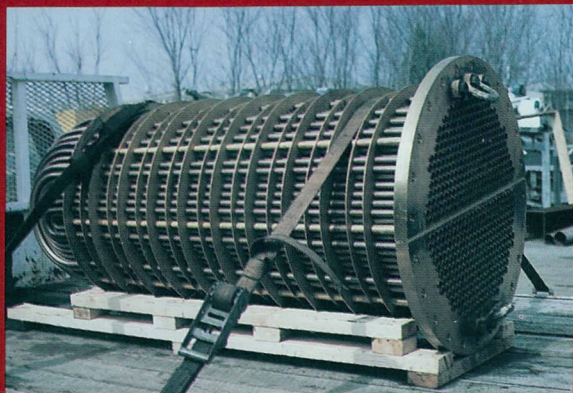
Fin-fan coils of various types and sizes are routinely handled. This unit has 1" O.D. Admiralty tubes with L-footed tension wound Aluminum fins.



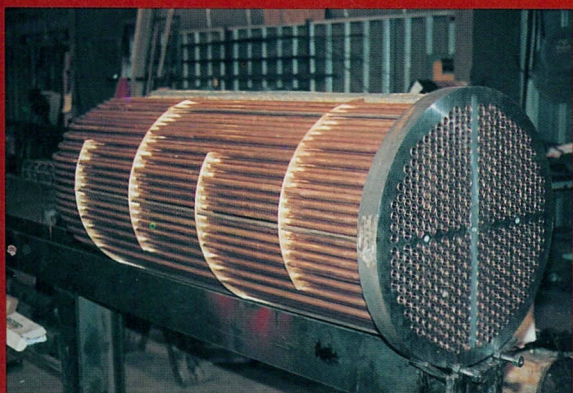
Fin-fan coil completed and ready for delivery.



Lower section of vertical 316L type Stainless Steel exchanger.



Lube oil cooler, U-tube design, for power plant installation.



Large chiller bundle in which tubesheet was reused with new Brass baffles instead of Carbon Steel. Tubes have Aluminum star inserts.



Hydrogen cooler with sheet fin design. These coolers can also be supplied with wrap-on fins in a variety of materials.



Various types of exchangers can be supplied ASME code or non-code. This unit is ASME code constructed with 316L type Stainless Steel.



**PES**  
Pingel Exchanger Service, Inc.

1185 Mason Circle  
Pevely, MO 63070

Tel: (314) 475-9500  
Fax: (314) 475-9505

OUR NEW  
AREA CODE  
IS  
**(636)**

## CREATING NEW, HIGHLY SPECIALIZED SERVICES

In 1980, James E. Pingel established PES to meet the needs of the heat exchanger industry in highly specialized and critical areas. All the company's resources and energies were focused upon creating a system of service that would fulfill the customer's needs in a new way. PES developed special capabilities in breakdown, replacement, and repair services under emergency conditions. The company set the highest standards for service and is recognized in the industry as a force for excellence and professionalism.

## EXTENSIVE EXPERIENCE AND DIVERSE KNOWLEDGE

Extensive experience is required to solve operational problems when much of the equipment is custom designed. Creative and practical knowledge must come together to achieve results. Diversity of knowledge is essential since all industrial sectors need to be served. A skillful and versatile service team provides consistently high quality workmanship, while meeting demanding schedules. The great variety of projects handled by the firm has created a reservoir of special knowledge and experience.

## HEAT EXCHANGERS INTERCOOLERS AFTERCOOLERS

Emergency Repairs and Replacements  
Custom Repairs and Replacements  
OEM Repairs and Replacements

## SERVING MULTIFACETED MARKETS NATIONWIDE

Brewing, Chemical, Food Processing, Hospitals, Munitions, Petrochemical, Petroleum, Pharmaceutical, Power, Pulp and Paper, Schools and diverse companies and industries across the country.

## FAST RESPONSE, SHORT DELIVERY, QUICK ANSWERS

PES is oriented toward emergency repairs and replacements of heat exchangers, either a custom design or from an original equipment manufacturer. We understand the critical importance of minimizing downtime and meeting the customer's need for a flexible, fast and creative approach to service. All the energy and ingenuity of the company is focused upon meeting those needs competently, quickly, and safely. Stringent quality control and industry standards are maintained under demanding time frames. A highly organized and conscientious approach to service is required. Quick answers must be the best answers. Short deliveries must be the right deliveries. A fast response must be the right response.

## SERVICE, OUR COMMITMENT TO YOU

Trust is central to our business. Our customers trust our ability to find the problem, find the solution, and use the right materials and methods. Our qualified sales and office staff is interested in assisting you in any way they can. Our highly motivated personnel bring enthusiasm for excellence to their work and offer our customers diverse capabilities unusual in the marketplace. Since PES was established in 1980, we have distinguished ourselves as reliable service specialists who achieve results and regard service to our customers as a professional commitment.

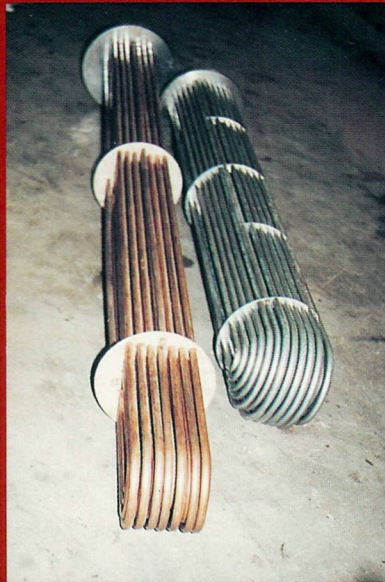


**PES**

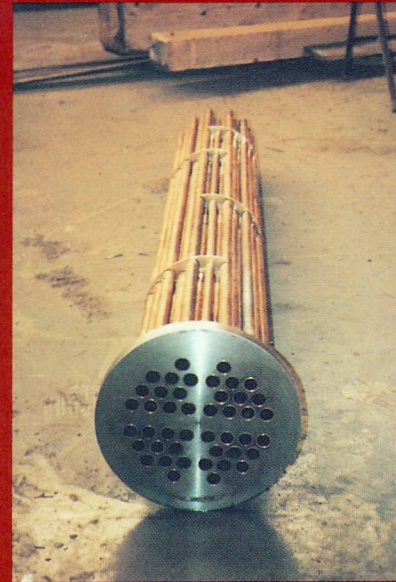
Pingel Exchanger Service, Inc.

**HEAT EXCHANGERS  
INTERCOOLERS  
AFTERCOOLERS**

Emergency Repairs and Replacements; Custom Repairs and Replacements for Custom Designs; Original Equipment Manufactured, Repairs and Replacements; Rebuilding, Retubing, Testing, Inspections, Cleaning, and New Replacements.



Two different types of U-bundles, one with baffles and the other with full diameter supports.



Standard U-bundle for storage tank or converter.

**COMPREHENSIVE  
SERVICE  
CAPABILITIES**

Retubing and Replacements for Process Heat Exchangers, Chillers, Condensers, Feedwater Heaters;

Repairs and Replacements of Air Handling Coils for Steam Coils, Reheat Steam, Preheat Steam Distributor, Hot Water Coils, Chilled Water Coils;

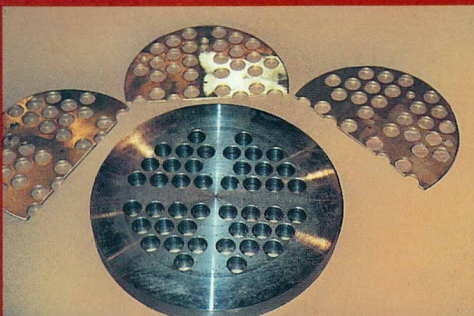
Replacement Tube Bundles for Converters, Domestic Water Heaters, Storage Water Heaters, Process Heat Exchangers, Air Compressor Coolers.

**LARGE INVENTORY  
OF COMPONENTS**

Predrilled Tubesheets and Baffles in the most common sizes; Replacement Tube Bundles; Intercoolers and Aftercoolers; Replacement Coolers, Replacement Air Handling Coils; Aftercoolers and Oil Coolers.

**FAST RESPONSE  
SHORT DELIVERY  
QUICK ANSWERS**

Most units can be quoted in a few hours after receiving information. Standard price sheets are available in some cases. Normal delivery time is two (2) to four (4) weeks, or one week on an overtime basis. Rush shipments available. **Over 40 sizes of Intercoolers, Aftercoolers, and Oil Coolers for next day shipment.** Special Emergency Service is provided in two (2) to four (4) days. PES owned company vehicles are used whenever possible. Service is available 24 hours a day and 7 days a week.



Tubesheets and baffles predrilled and put into stock for faster turnaround on some of the standard tube bundles.



Standard storage tank heater with Copper tubes, Brass baffles, Brass tie rods, spacers, and Carbon Steel tubesheet.



**Pingel Exchanger Service, Inc.**

OUR NEW  
AREA CODE  
IS  
**(636)**

1185 Mason Circle  
Pevely, MO 63070

Tel: (314) 475-9500  
Fax: (314) 475-9505

Comprehensive Service Capabilities  
Heat Exchangers, Intercoolers, Aftercoolers  
Specializing in Emergency Repairs Replacements

**SERVING DIVERSE INDUSTRIES NATIONWIDE**